

United States Department of the Interior
National Park Service

National Register of Historic Places Registration Form

This form is for use in nominating or requesting determinations for individual properties and districts. See instructions in National Register Bulletin, *How to Complete the National Register of Historic Places Registration Form*. If any item does not apply to the property being documented, enter "N/A" for "not applicable." For functions, architectural classification, materials, and areas of significance, enter only categories and subcategories from the instructions.

1. Name of Property

Historic name: Mogollon Cemetery

Other names/site number: N/A

Name of related multiple property listing: N/A

2. Location

Street & number: North of Mogollon, 300 feet east of Fannie Mine on USFS Road 40560

City or town: Mogollon State: NM County: Catron Zip Code: 88039

Not For Publication: Vicinity:

3. State/Federal Agency Certification

As the designated authority under the National Historic Preservation Act, as amended,

I hereby certify that this X nomination ___ request for determination of eligibility meets the documentation standards for registering properties in the National Register of Historic Places and meets the procedural and professional requirements set forth in 36 CFR Part 60.

In my opinion, the property X meets ___ does not meet the National Register Criteria. I recommend that this property be considered significant at the following level(s) of significance:

___ national ___ statewide X local

Applicable National Register Criteria:

X A ___ B X C ___ D

_____ Signature of certifying official/Title:	_____ Date
_____ State or Federal agency/bureau or Tribal Government	

In my opinion, the property ___ meets ___ does not meet the National Register criteria.	
_____ Signature of commenting official:	_____ Date
_____ Title:	_____ State or Federal agency/bureau or Tribal Government

Mogollon Cemetery
Name of Property

Catron County, NM
County and State

4. National Park Service Certification

I hereby certify that this property is:

- entered in the National Register
- determined eligible for the National Register
- determined not eligible for the National Register
- removed from the National Register
- other (explain:) _____

Signature of the Keeper

Date of Action

5. Classification

Ownership of Property

(Check as many boxes as apply.)

- Private:
- Public – Local
- Public – State
- Public – Federal

Category of Property

(Check only **one** box.)

- Building(s)
- District
- Site
- Structure
- Object

Mogollon Cemetery
Name of Property

Catron County, NM
County and State

Number of Resources within Property

(Do not include previously listed resources in the count)

Contributing	Noncontributing	
<u>0</u>	<u>0</u>	buildings
<u>1</u>	<u>0</u>	sites
<u>0</u>	<u>1</u>	structures
<u>1</u>	<u>2</u>	objects
<u>2</u>	<u>3</u>	Total

Number of contributing resources previously listed in the National Register 0

6. Function or Use

Historic Functions

(Enter categories from instructions.)

Funerary: cemetery

Current Functions

(Enter categories from instructions.)

Funerary: cemetery

Mogollon Cemetery
Name of Property

Catron County, NM
County and State

7. Description

Architectural Classification

(Enter categories from instructions.)

Other: community cemetery

Materials: (enter categories from instructions.)

Principal exterior materials of the property: Stone, Metal, Wood

Narrative Description

(Describe the historic and current physical appearance and condition of the property. Describe contributing and noncontributing resources if applicable. Begin with a **summary paragraph** that briefly describes the general characteristics of the property, such as its location, type, style, method of construction, setting, size, and significant features. Indicate whether the property has historic integrity.)

Summary Paragraph

Mogollon Cemetery is one mile north of the mining town of Mogollon in rural Catron County, New Mexico. It is located along Forest Service Road 40560 in the Gila National Forest. The cemetery is located west of the National Register mining properties: Fannie Hill Mill and Company Town and Little Fannie Mine. Mogollon Cemetery is located 500 feet above the town at the head of Graveyard Gulch. The cemetery is a 2.3-acre, unplanned cemetery with 207 identified burial sites. These include burial mounds often covered with rocks; handmade grave markers; commercial stone markers; family plots with wood-and-metal fences; and a mass burial mound covered with rocks. The wooded site includes few clearings and no formal landscaping; burials are reached by unplanned foot paths. The cemetery is enclosed by a barbed-wire fence and pipe-rail entrance gate, which was erected in 1998.

Narrative Description

Mogollon Cemetery is situated in the Mogollon Mountains on a flat ridge between the Sled Saddle and Fannie Hill peaks in western New Mexico. The cemetery is roughly 7,100 feet above

Mogollon Cemetery

Name of Property

Catron County, NM

County and State

sea level and is covered with piñon and cedar trees. Burials in the unplanned cemetery are concentrated in the south side, near the entrance. The main entrance is located at the southeast corner and marked by a gate, manufactured in 1998, which reads “Mogollon Cemetery 1890” on a metal plate atop the gate. Foot paths provide pedestrian circulation through the cemetery but there are no paved walks or drives (photos 1-4). A three-and-five-strand barbed-wire fence supported at the corners with cedar-post braces bounds the property.

Mogollon Cemetery is accessed from the (paved) NM 159, Bursum Road, in Mogollon, then the unpaved Catron County C-040 (Fannie Road) across Graveyard Gulch. C-040 requires a four-wheel-drive vehicle for 0.9 miles and is sometimes only passable in winter or monsoon months by foot or by horseback. C-040 leads to Gila National Forest (GNF) road 40560, which curves from the end of C-040 around the easterly and northerly sides of Mogollon Cemetery. GNF 40560 is closed to motor vehicles.

The cemetery is situated in the Colorado Plateau Pinyon-Juniper Woodland ecological system. This ecology occurs in dry mountains and foothills of the Colorado Plateau region including the Western Slope of Colorado to the Wasatch Range, south to the Mogollon Rim, and east into the northwestern corner of New Mexico. It is typically found at lower elevations ranging from 5,000 to 7800 feet above sea level. These woodlands occur on warm, dry sites on mountain slopes, mesas, plateaus, and ridges.

Vegetation in Mogollon Cemetery is overgrown and includes an overstory of piñon pines and juniper trees. The understory consists of mountain mahogany, gray oak, bear grass, banana yucca, rabbit brush, Apache plume, prickly pear cactus, and exposed soil. Irises that continue to grow at gravesides are the few formal plantings. Mining activity during 1887-1942 stripped hillsides of trees for mining construction, domestic use, and to power a steam engine. The cemetery was not harvested for trees.

Mogollon Cemetery contains 207 identified graves and burial mounds. Most are identified, but 71 are unidentified burials. Sixty-five comprise handmade markers and nearly one hundred were commercially produced. Fifty-one burials appear as earthen mounds. The cemetery includes roughly a dozen burials that were added after 1942, the end of the historic period. The cemetery was first mapped in 1995 by Rita B. Hecht, who worked for the Gila National Forest.

The cemetery includes family plots for multiple family members and smaller plots for individuals. These are fashioned from pipe rails and wrought-iron fences. Some are enclosed by woven-wire fences. The Wey family plot (photo 6) is among the largest and was erected in 1999. It is surrounded by an ornate cast-metal fence on a stone foundation.

Significant markers are characterized by found materials assembled with a high level of craft. Commercial markers, which are also significant to the site, include stone, metal, and concrete markers manufactured beyond the community of Mogollon and shipped to town. These markers can take the form of classical images, sculptures, and plain markers. The following markers are

Mogollon Cemetery
Name of Property

Catron County, NM
County and State

representative examples that contribute to the significance of the cemetery because of their physical characteristics, as evidenced in the materials and workmanship. These markers are included within the period of significance of 1892 to 1942.

Early Handmade Markers

Handmade markers distinguish Mogollon Cemetery from later cemeteries that include mostly commercial markers.¹ The handmade markers were created in wood, metal, and stone and illustrate the creativity of family members and the lean economic circumstances that necessitated these markers, often built of found materials. A wood cross (photo 7) without inscription appears roughly made but includes subtle, rounded ends on the arms of the cross and the top. Wood crosses, most constructed in the second half of the 20th century without identifying marks, appear throughout the cemetery.

This metal cross (photo 9) was built of electrical conduit and topped, possibly, by a component from a weathervane. Metal pipe was a popular material for early handmade markers. This includes the burial marker for Emil Peterson, which is a wood plaque bolted to a metal post (photo 8). Metal plaques are found throughout the cemetery and are mostly no longer legible (photos 10-11). An early, unknown burial is marked by barrel hoop bent in the form of a cross and supported by a metal pipe (photo 12). Another type of metal marker is shaped with wire to form a cross (photo 14).

Some markers were fashioned from reused materials without reworking or personalization. A spike, for example, used in mining operations establishes an unmarked burial, likely a miner (photo 15).

Fieldstone

Fieldstones are used extensively at Mogollon Cemetery. They outline burials, cover burials, and serve as cairns. The burial of Jose Pino Sigala is marked by an unshaped fieldstone carved with a small cross. Similarly, the burial of Nancy Wey Whitty is marked by two unshaped fieldstones. The Lester and Lyneau Molyneau burial is marked by a pile of fieldstone rubble local to the region (photo 21). The burial includes text written on a rock and a heart roughly constructed of baling wire. The Wray family plot is outlined with several courses of fieldstone (photo 20). Commercially produced marble headstones mark the side-by-side burials of Wray family members. A large fieldstone pile at the north end of the cemetery marks the mass burial of victims of Spanish influenza in 1918 (photo 22). The fieldstones, which appear in a heap, mark the graves of some of the fifty-two flu victims. Some influenza victims are buried in family plots.

¹ Early markers were erected between the establishment of the cemetery in 1894 and roughly 1915. Most commercially manufactured markers were erected after 1915.

Mogollon Cemetery
Name of Property

Catron County, NM
County and State

Stone and Cement

Cement markers at Mogollon Cemetery are less common than other materials. The burial of Abran Barron is marked by a cement cross with the name and date of the burial inscribed with a pointed object when the cement was wet (photo 13). Like many of the early homemade markers at Mogollon Cemetery, this marker can be manufactured by family or others without the expense of commercially produced markers. Similarly, sandstone, a soft sedimentary stone, can be shaped and inscribed by hand. The small sandstone marker for "MF" includes a round head with a roughly incised cross and text (photo 16). The burial of Con Cedre Justa De Archuletta is a slab of sandstone with a curved head with incised cross, stars, and triangular base (photo 17). The roughly produced imagery and the irregular and slanted letters suggest this is a homemade marker.

The thin sandstone slabs that mark the burials of Ramon Sarracino and Ramon Sarracino, Jr., were likely produced by a stone worker (photo 18). The markers are set in roughly shaped fieldstone bases and include hexagonal heads surmounted by crosses. The basic stenciled text indicates a stone worker with less skill at caving stone than in shaping it. The marker of the burial of Ralph Jenks is also a sandstone marker set in a roughly shaped fieldstone base. The marker, produced with proficiency, includes a Celtic cross though some of the letters in the text have been reversed.

Commercial Markers

Roughly one hundred commercially produced markers appear throughout Mogollon Cemetery. The most common of these are built of stone, usually marble or granite. Most markers appear as slanted headstones with inscriptions; upright markers, sometimes with a base; and columns (photos 23-26). These include the John Jose marker, an upright slab that records two deaths with carved images of mining tools (photo 26) and the Epifano Morales marker with joined hands. The Viola Mosely Brice, Molinas family, and Coates family markers are stone markers. The Williams and Trevizo markers are excellent examples of vertical stone markers in the form of a cross. The marble Estella Portillo monument is a commercially produced marker in the form of a lamb to signify a child's burial (photo 25).

The few commercial metal markers were produced in the early 20th century and include the cast-iron Encarcion Rodriguez Carrion marker, which includes a weeping angel on an ornate, inscribed base (photo 27). The Longino Bustillos marker is a cast-metal marker in the form of a crucifixion with silver and gold paint. The burial of Delfina Lopez is marked by a cast-iron cross with a figure of Christ. The marker for Longino Bustillos is a florid cross that includes a smaller inset crucifixion.

Mogollon Cemetery
Name of Property

Catron County, NM
County and State

Integrity

Mogollon Cemetery retains a high level of integrity in the aspects of design, materials, and workmanship. The rural, unplanned character of the cemetery appears in the paths, fences, family plots, and markers, which remain intact because of inactivity at the cemetery, neglect, and its remote location. It is likely that the cemetery included more open space, which has become overgrown. Many of the significant handmade and commercial markers remain intact. In other cases, paint has faded so markers are not legible. Wooden crosses have deteriorated, metals have rusted, and some markers have settled in the soft soil. The majority of markers retain the aspects of design, materials, and workmanship. Others are less than fifty years of age and are classified as contributing. The only markers that do not contribute are that were erected after the period of significance. The setting, which may have included mining activity, is completely forested. This region is one of the state's Dark Skies locations, which also contributes to its setting. The experience of walking through the cemetery along the paths and examining the markers captures the aspect of feeling that one is in an early 20th century cemetery. The aspect of association derives from the history of the region that is represented in the plan of the cemetery and its burial markers.

Contributing and Noncontributing Resources

The cemetery is counted as one contributing site.

The burial markers are counted as one contributing object.

The following structures are noncontributing because they were constructed after the end date of the period of significance of 1942.

The burial markers constructed after the 1942 period of significance are counted as one noncontributing object.

The main gate is counted as one noncontributing object.

The fencing that surrounds the cemetery and the south gate is counted as one noncontributing structure.

Mogollon Cemetery
Name of Property

Catron County, NM
County and State

8. Statement of Significance

Applicable National Register Criteria

(Mark "x" in one or more boxes for the criteria qualifying the property for National Register listing.)

- A. Property is associated with events that have made a significant contribution to the broad patterns of our history.
- B. Property is associated with the lives of persons significant in our past.
- C. Property embodies the distinctive characteristics of a type, period, or method of construction or represents the work of a master, or possesses high artistic values, or represents a significant and distinguishable entity whose components lack individual distinction.
- D. Property has yielded, or is likely to yield, information important in prehistory or history.

Criteria Considerations

(Mark "x" in all the boxes that apply.)

- A. Owned by a religious institution or used for religious purposes
- B. Removed from its original location
- C. A birthplace or grave
- D. A cemetery
- E. A reconstructed building, object, or structure
- F. A commemorative property
- G. Less than 50 years old or achieving significance within the past 50 years

Mogollon Cemetery
Name of Property

Catron County, NM
County and State

Areas of Significance

(Enter categories from instructions.)

Social History

Art

Period of Significance

1892-1942

Significant Dates

1892—John Jose is the first recorded burial

1942—Toby Herrera is the last historic burial

Significant Person

(Complete only if Criterion B is marked above.)

N/A

Cultural Affiliation

Architect/Builder

N/A

Mogollon Cemetery
Name of Property

Catron County, NM
County and State

Statement of Significance Summary Paragraph (Provide a summary paragraph that includes level of significance, applicable criteria, justification for the period of significance, and any applicable criteria considerations.)

Mogollon Cemetery is significant at the local level under National Register Criterion A in the area of social history because the cemetery plan (counted as one site) and burial markers (counted as one object) convey the social, economic, and industrial history of the town of Mogollon. The Mogollon Cemetery is significant at the local level under National Register Criterion C in the area of art because the handmade markers, especially, and the commercially produced markers represent art, craft, and materials specific to the Mogollon community. The markers, many constructed by residents, convey their ingenuity and skill as they mourned the loss of family members.

Narrative Statement of Significance (Provide at least **one** paragraph for each area of significance.)

Mogollon is among the most important mining towns in New Mexico from the town's founding in 1889 to the final closing of the nearby Fannie Hill mill in 1942. The Mogollon/Cooney mining region, of which Mogollon was the center, was the largest producer of gold and silver in the state from 1887 to 1925 and from 1934 to 1942. Mines in and around Mogollon, especially the Eberle, Last Chance, Deadwood, Maud S, and Top, and the Fannie Hill mine all produced gold and silver starting in the spring of 1887 with Frank Vingo's discovery of gold at Fannie Hill mine. It produced almost half of the silver found in New Mexico from 1903-1930, as well as large quantities of gold. The silver production in the Mogollon region dwarfed that of any other mining area in New Mexico for over three decades.

Mogollon is among the best-preserved New Mexico mining towns. Mogollon's plain utilitarian structures are good examples of those erected in many isolated mining towns. Residents were mostly miners; some brought their families, but most were single men; and a much smaller number of proprietors who operated located businesses. The poor transportation from Mogollon to outside communities and sources of supplies necessitated a heavy reliance on locally produced materials: lumber for residences and stone or lumber for most commercial buildings. The undependability of mining employment and the fluctuating precious metals markets account for the small size of the Mogollon houses and the lack of ornament or embellishments. Many of the one- and two-room houses were built along the main road that passes through the narrow canyon. Houses are clustered on either side of the single road. Hotels served unmarried miners and miners without families. Most miners lived in small, two- or three-room wood-frame houses. The earliest miners lived in canvas tents in the warmer months. Miners were equally split among Anglos and Hispanics.

United States census figures for Cooney and Mogollon and for the nearby farming community of Alma reflect the fortunes of local mining activity. Cooney was a successful mining community

Mogollon Cemetery
 Name of Property

Catron County, NM
 County and State

located two miles north of Mogollon. Cooney was never as large or prosperous as Mogollon. Alma is a small farming community located east of Mogollon in the San Francisco River valley.

	Socorro Co.	Cooney	Mogollon	Alma
1880	7,875	---	---	---
1890	9,595	351	---	368
1900	12,195	---	599	128
1910	14,761	189	799	364
1920	14,061	---	482	324
1940	4,881	---	554	129
1950	3,533	---	45	109

The population of Mogollon was 799 during the peak years of 1915 and 1916. Catron County was formed from Socorro County in 1921.

Mogollon Cemetery

Mogollon Cemetery is important because its burial markers reflect the status and wealth of those interred and, by extension, the early history of Mogollon. The 207 identified burials in the rural, unplanned cemetery include roughly 65 handmade markers that utilize barrel hoops, plumbers’ pipe, wood crosses, wire, tin cans, and hand-carved inscriptions. Roughly 100 commercially manufactured markers are found throughout the cemetery, indicating persons or families with the ability to invest in a burial marker. The cemetery includes burials of persons of lower status whose graves are either unmarked or identified by earthen mounds.

The cemetery is also significant because of the unplanned, ad hoc arrangements of the markers and the lack of paved streets. The greatest concentration of concentration of markers are located on south side of the cemetery where they appear pell-mell with no regular orientation and little space between them. The north side includes fewer markers. The lack of streets is characteristic of rural cemeteries, especially cemeteries, like Mogollon Cemetery, that were located on terrain that was difficult to access and difficult to reach with paving equipment. The lack of street may also reflect a choice by the community to not invest in an expensive undertaking to establish a road network through the cemetery.

Mogollon Cemetery includes, based on an evaluation of surnames that appear on grave markers, 68 Hispanic markers; 56 Anglo/European markers; some possibly Italian; and one marker for Vidor Mong, who may have been of Chinese descent. There are no fenced areas specifically for social or cultural groups. There are no obvious surnames of African Americans or Native

Mogollon Cemetery

Name of Property

Catron County, NM

County and State

Americans. A member of the Bustillos family with Chiricahua Apache ancestry is buried in the cemetery. The entire Bustillos family died of Spanish influenza and is buried beneath an unmarked rock-covered mound. The mound is the burial place for some of the fifty-two Mogollon victims of the flu, including a senior mining company official.

The Mogollon Cemetery reflects the difficulty of frontier life in a remote mining community. It was often dangerous, and mortality could result from many causes. Mine workers contracted “miner’s consumption” caused by cyanidation, often dying within a few years. There were premature births, deaths in childbirth, and deaths from tuberculosis and syphilis. Others died of dysentery caused by malnutrition. Some miners died from cave-ins and electrocution. In town, deaths included: “gunshot wound of upper abdomen and lower chest. Street fight,” “Septicemia of the lower jaw followed tooth extraction,” “fell from his wagon at the Last Chance mine when the brakes failed,” and “death from a blow from a hand axe.”

Rural Cemeteries in Catron County

Cemeteries in this western county typically include handmade markers, unmarked burials, and commercial markers. These cemeteries are unplanned with only unpaved paths to direct visitors through the landscape. The nearby communities of Glenwood and Alma, both in the San Francisco River Valley; and Cooney alongside Mineral Creek north of Mogollon, have their own similarly unplanned rural cemeteries.

The Glenwood cemetery, which includes more burials than Mogollon, was established in 1897 and includes 283 burials with 189 commercial markers, 10 handmade markers, and 84 earthen mounds. Many are marked by wood crosses and metal plaques. The cemetery in Alma includes a cemetery with 352 burials in an open (tree-less) field. The cemetery features 63 handmade markers, 213 commercial markers, and 76 earthen mounds. Handmade markers include wood crosses and metal plaques. Cooney is an abandoned mining town four miles north of Mogollon. The Cooney cemetery, which is smaller than the Mogollon cemetery, includes one commercial marker, three handmade markers, and four burial mounds. The cemetery is distinguished by a large sepulcher carved in rock for town founder James Cooney.

Mogollon Cemetery is significant among cemeteries in the region because of the number and diversity in its handmade grave markers, which include markers that reflect the town’s mining history. Alma, with more markers than Mogollon, includes more commercially produced markers. The imagery in Alma’s handmade markers reflects the ranching history of the town. The cemeteries at Glenwood and Cooney are significantly smaller than Mogollon and each includes less than a dozen commercial and handmade markers.

Criterion Consideration D: Cemeteries

Mogollon Cemetery meets Criterion Consideration D because the cemetery derives its primary importance from associations with historic events and distinctive design features. According to

Mogollon Cemetery

Name of Property

Catron County, NM

County and State

National Register Bulletin: Guidelines for Evaluating and Registering Cemeteries and Burial Places: “under Criterion A, the events or trends with which the burial place is associated must be clearly important, and the connection between the burial place and its associated context must be unmistakable. There are many ways in which a cemetery might represent an important aspect of community’s or a culture’s history through association with a specific event or by representing broader patterns of attitudes or behavior.”²

The Mogollon Cemetery is representative of rural cemeteries in New Mexico at the turn of the 20th century when few were formally planned and the markers, which include homemade markers and commercially produced markers, illustrate art, craft, and materials specific to the Mogollon community. These include handmade markers constructed of wood, stone, and metal, and most notably found objects. The Mogollon Cemetery is significant because the handmade markers and the commercially produced markers represent ingenuity and skill of Mogollon residents as they mourned the loss of family members. The earliest markers were fashioned from found objects in the form of crosses. These markers were made from pipe, wire, wood, and, at least, one barrel hoop. Homemade markers also appear as rock piles and stone and cement slabs, both handwritten and hand carved. Commercial markers, built of cast-iron and carved stone, were installed later in the 20th century. Commercial markers are important because they represent economic prosperity among the leading families of Mogollon.

Markers constructed from found objects represent the low wages of miners and the economic struggles of a poor mining community. Later, commercially manufactured markers represent the economic rise of individual families in the town. The history of Mogollon, for example, is recorded in the rock pile that covers the burials of influenza victims in roughly 1918. The miner burials marked with a spike and a marker that include miner iconography illustrates an important component of the history of Mogollon.

Mogollon Cemetery meets Criterion Consideration D because the cemetery embodies the distinctive characteristics of a type, period, method of construction. According to *National Register Bulletin: Guidelines for Evaluating and Registering Cemeteries and Burial Places*: “under Criterion C, funerary monuments and their associated artworks, buildings, and landscapes associated with burial places must be good representatives of their stylistic types or period and method of construction or fabrication.”³

² Elisabeth Walton Potter and Beth M. Boland. *National Register Bulletin 41: Guidelines for Evaluating and Registering Cemeteries and Burial Places*. (U.S. Department of the Interior, National Park Service, 1992), 9.

³ *Ibid.*, 12.

Mogollon Cemetery
Name of Property

Catron County, NM
County and State

9. Major Bibliographical References

Bibliography (Cite the books, articles, and other sources used in preparing this form.)

Bradford, William Tooahyaysay. Email correspondence with Cordelia Rose, July 2023. Mogollon, New Mexico.

Bustillos, Cruz. Interviews by Cordelia Rose, July 2023. Mogollon, New Mexico.

Census Map, Catron County, New Mexico, 1940. National Archives and Record Center, College Park, Maryland.

Cook, Fleeta. "Footprints of Early Settlers: Mogollon through Cook's Peak, 1868-1980," FamilySearch International (1980): 46-52.

Cumiford, William L. "Little Fannie Mine." Application for Registration. New Mexico State Register of Cultural Properties. 1978.

Down, Nick. Interviews by Cordelia Rose, August 2023. Mogollon, New Mexico.

Euler, Chris and Ayleen Gutierrez. Interviews and emails by Cordelia Rose, July-August 2023. Mogollon, New Mexico

FSM 2300 Recreation, Wilderness, and Related Resource Management, Chapter 2360—Heritage Program Management. Forest Service Manual National Headquarters (WO) Washington, DC. US Forest Service, July 25, 2008.

Hecht, Rita B. "Drawings of grave markers," April 1995. Mogollon Cemetery, Catron County, New Mexico.

_____. "Map of Mogollon Cemetery, 1892-2016." Catron County, New Mexico.

Hogan, Pamela. Interview by Cordelia Rose, August 2023. Mogollon, New Mexico.

Hoover, H. A. *Tales from the Bloated Goat*. El Paso, Texas: Western Press, 1958.

King, Stanley E. Interviews by Cordelia Rose. April 2023. Mogollon, New Mexico.

Mandoe, Niels. Interviews by Cordelia Rose, April 2023. Mogollon, New Mexico.

Maples, James N. and Elizabeth A. East. "Destroying Mountains, Destroying Cemeteries: Historic Mountain Cemeteries in the Coalfields of Boone, Kanwha, and Raliegh Counties, West Virginia." *Journal of Appalachian Studies*, Vol. 19 (Spring/Fall 2013): 7-26.

Mogollon Cemetery
Name of Property

Catron County, NM
County and State

Map of Cooney Mining District 18. Assessor's Office, Catron County, Reserve, New Mexico.

The Mogollon Mine, June 1906.

Morgan, Katie. Interviews by Cordelia Rose. April-July 2023. Mogollon, New Mexico.

Moore, Bob. Interviews by Cordelia Rose. April 2023. Mogollon, New Mexico.

Potter, Elisabeth Walton and Beth M. Boland. *National Register Bulletin 41: Guidelines for Evaluating and Registering Cemeteries and Burial Places*. U.S. Department of the Interior, National Park Service, 1992.

Rakocy, Bill. *The Great Western Historian Book No. 1, Mogollon Diary No.2*. Bravo Press, 1988.

Ray, Jeff. Mogollon Cemetery Map, September 2023. Mogollon, New Mexico.

Sharp, Jay W. *Mogollon: A Southwestern New Mexico Ghost Town*. Desert USA. April 2023.
<https://www.desertusa.com/desert-new-mexico/mogollon-ghost-town.html>

Terrell, Cresta. Interviews by Cordelia Rose, April 2023. Mogollon, New Mexico.

Wilson, Chris. "Fannie Hill Mill and Company Town Historic District." National Register Registration Form, 1988.

_____. "Mogollon Historic District." National Register Registration Form, 1987.

Mogollon Cemetery
Name of Property

Catron County, NM
County and State

Previous documentation on file (NPS):

- preliminary determination of individual listing (36 CFR 67) has been requested
- previously listed in the National Register
- previously determined eligible by the National Register
- designated a National Historic Landmark
- recorded by Historic American Buildings Survey # _____
- recorded by Historic American Engineering Record # _____
- recorded by Historic American Landscape Survey # _____

Primary location of additional data:

- State Historic Preservation Office
- Other State agency
- Federal agency
- Local government
- University
- Other: Mogollon Cemetery Archives, Mogollon, New Mexico
Name of repository: _____

Historic Resources Survey Number (if assigned): _____

10. Geographical Data

Acreage of Property: 02.3 acres

Use either the UTM system or latitude/longitude coordinates

Latitude/Longitude Coordinates (decimal degrees)

Datum if other than WGS84: _____

(enter coordinates to 6 decimal places)

- | | |
|------------------------|------------------------|
| 1. Latitude: 33.405983 | Longitude: -108.792149 |
| 2. Latitude: | Longitude: |
| 3. Latitude: | Longitude: |
| 4. Latitude: | Longitude: |

Mogollon Cemetery
Name of Property

Catron County, NM
County and State

Verbal Boundary Description (Describe the boundaries of the property.)

The National Register boundary appears on the sketch map as a red line drawn to scale and corresponding with the point of latitude and longitude in Section 10.

Boundary Justification (Explain why the boundaries were selected.)

The National Register boundary includes the intact property historically associated with the Mogollon Cemetery.

11. Form Prepared By

name/title: Cordelia Rose
organization: Whitewater Mesa Labyrinths
street & number: 355 Bursum Road
city or town: Glenwood state: NM zip code: 88069
e-mail: cordelia.rose3@gmail.com
telephone: 575 539-2868
date: August 31, 2023

State Historic Preservation Office

name/title: Steven Moffson, State and National Register Coordinator
organization: New Mexico Historic Preservation Division
street & number: 407 Galisteo Street, Suite 236
city or town: Santa Fe state: New Mexico zip: 87501
telephone: 505.476.04444
date: October 5, 2023

Additional Documentation

Submit the following items with the completed form:

- **Maps:** A **USGS map** or equivalent (7.5 or 15 minute series) indicating the property's location.
- **Sketch map** for historic districts and properties having large acreage or numerous resources. Key all photographs to this map.
- **Additional items:** (Check with the SHPO, TPO, or FPO for any additional items.)

Mogollon Cemetery
Name of Property

Catron County, NM
County and State

Photographs

Submit clear and descriptive photographs. The size of each image must be 1600x1200 pixels (minimum), 3000x2000 preferred, at 300 ppi (pixels per inch) or larger. Key all photographs to the sketch map. Each photograph must be numbered and that number must correspond to the photograph number on the photo log. For simplicity, the name of the photographer, photo date, etc. may be listed once on the photograph log and doesn't need to be labeled on every photograph.

Photo Log

Name of Property: Mogollon Cemetery

City or Vicinity: Mogollon vicinity

County: Catron

State: New Mexico

Photographers: Anna Blomfield (Photos 7)
Franky DeAngelis (Photos 1, 6, 8, 9-18)
Cordelia Rose (Photos 2-4, 16)

Date Photographed: July-August 2023

Description of Photograph(s) and number, include description of view indicating direction of camera:

Burial (map) numbers correspond to the Sketch Map by Rita B. Hecht (1995) and the Mogollon Cemetery Inventory by Cordelia Rose, Map by Jeff Ray (September 2023).

Description of Photograph(s) and number, include description of view indicating direction of camera:

- 1 of 27. Main entrance gate, photographer facing west.
- 2 of 27. Clearing on north side, photographer facing west.
- 3 of 27. Clearing on north side, photographer facing east.
- 4 of 27. Clearing on south side, photographer facing west.
- 5 of 27. Baugh family plots (d.1890 and 1918), photographer facing west (map 130).
- 6 of 27. Wey family plot (d.1999-2018), photographer facing west (map 150).

Mogollon Cemetery
Name of Property

Catron County, NM
County and State

- 7 of 27. Wood cross, photographer facing west (marker 7).
- 8 of 27. Wood plaque bolted to metal post. Burial of Emil Peterson (1926). Photographer facing west.
- 9 of 27. Metal cross constructed of electrical conduit, photographer facing east (marker 6).
- 10 of 27. Metal cross with metal plate, photographer facing west (marker 17).
- 11 of 27. Metal cross (pipe) and metal plaque. Burial of Ruben Estrada (1918). Photographer facing west.
- 12 of 27. Cross formed by metal barrel hoop in the shape of a cross and supported by plumbing pipe. Unmarked burial. Photographer facing west.
- 13 of 27. Cement marker with incised text. Burial of Abran Barron (1917). Photographer facing west (marker 29).
- 14 of 27. Wire cross with rock base, photographer facing west (marker 49).
- 15 of 27. Miner's spike denotes burial, photographer facing west (marker 14).
- 16 of 27. Sandstone marker with incised cross and hand-carved text. Burial of MF (1900). Photographer facing west (marker 83).
- 17 of 27. Sandstone marker with incised cross, stars, and triangular base with text. Burial of Con Cedre Justa De Archuleta (1909). Photographer facing west (marker 9).
- 18 of 27. Polished sandstone markers. Burials of Ramon Sarracino (1916) and Ramon Sarracino, Jr. (1918). Photographer facing west.
- 19 of 27. Sandstone marker with Celtic cross. Burial of Ralph Jenks (1900). Photographer facing west.
- 20 of 27. Wray family plot with commercial markers surrounded by stacked stones, photographer facing west (marker 144).
- 21 of 27. Rock cairn with inscription and wire heart. Burial of Lester And Lyneau Molyneau (d. 2000 and 2010), photographer facing east (marker 152).
- 22 of 27. Rock mound covering victims of the Spanish Flu (1918), photographer facing south (marker 149).

Mogollon Cemetery
Name of Property

Catron County, NM
County and State

23 of 27. Marble cross with crucifixion surrounded by woven-wire fence. Burial of Marie Trevizo (d.1937), photographer facing west (marker 36).

24 of 27. Granite column surrounded by woven-wire fence. Burial of Thomas Penberthy Williams (d.1912), photographer facing west (marker 71).

25 of 27. Marble lamb with woven-wire fence. Burial of Estella Portillo (d.1911), photographer facing west (marker 94).

26 of 27. Sandstone commercial marker, Burial of John Jose (d.1892), photographer facing west (marker 58).

27 of 27. Cast-iron angel commercial marker, Burial of Encarcion Rodriguez Carrion (d.1921), photographer facing west (marker 85).

Paperwork Reduction Act Statement: This information is being collected for applications to the National Register of Historic Places to nominate properties for listing or determine eligibility for listing, to list properties, and to amend existing listings. Response to this request is required to obtain a benefit in accordance with the National Historic Preservation Act, as amended (16 U.S.C.460 et seq.).

Estimated Burden Statement: Public reporting burden for this form is estimated to average 100 hours per response including time for reviewing instructions, gathering and maintaining data, and completing and reviewing the form. Direct comments regarding this burden estimate or any aspect of this form to the Office of Planning and Performance Management, U.S. Dept. of the Interior, 1849 C. Street, NW, Washington, DC.

Mogollon Cemetery
Name of Property

Catron County, NM
County and State



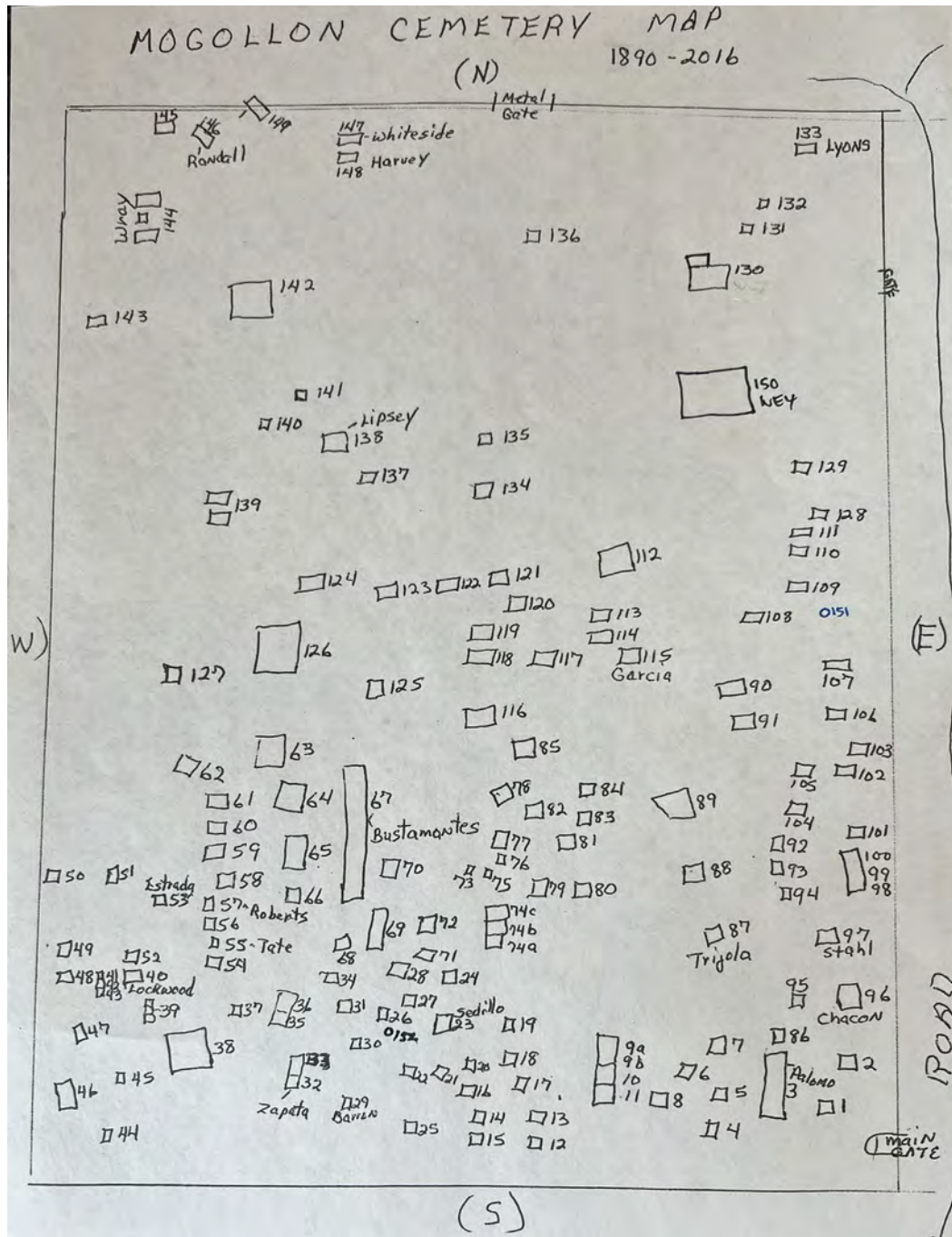
Mogollon Cemetery
Catron County, New Mexico
Location Map

National Register boundary 

Scale: 1.5 inches = 3 miles

Mogollon Cemetery
Name of Property

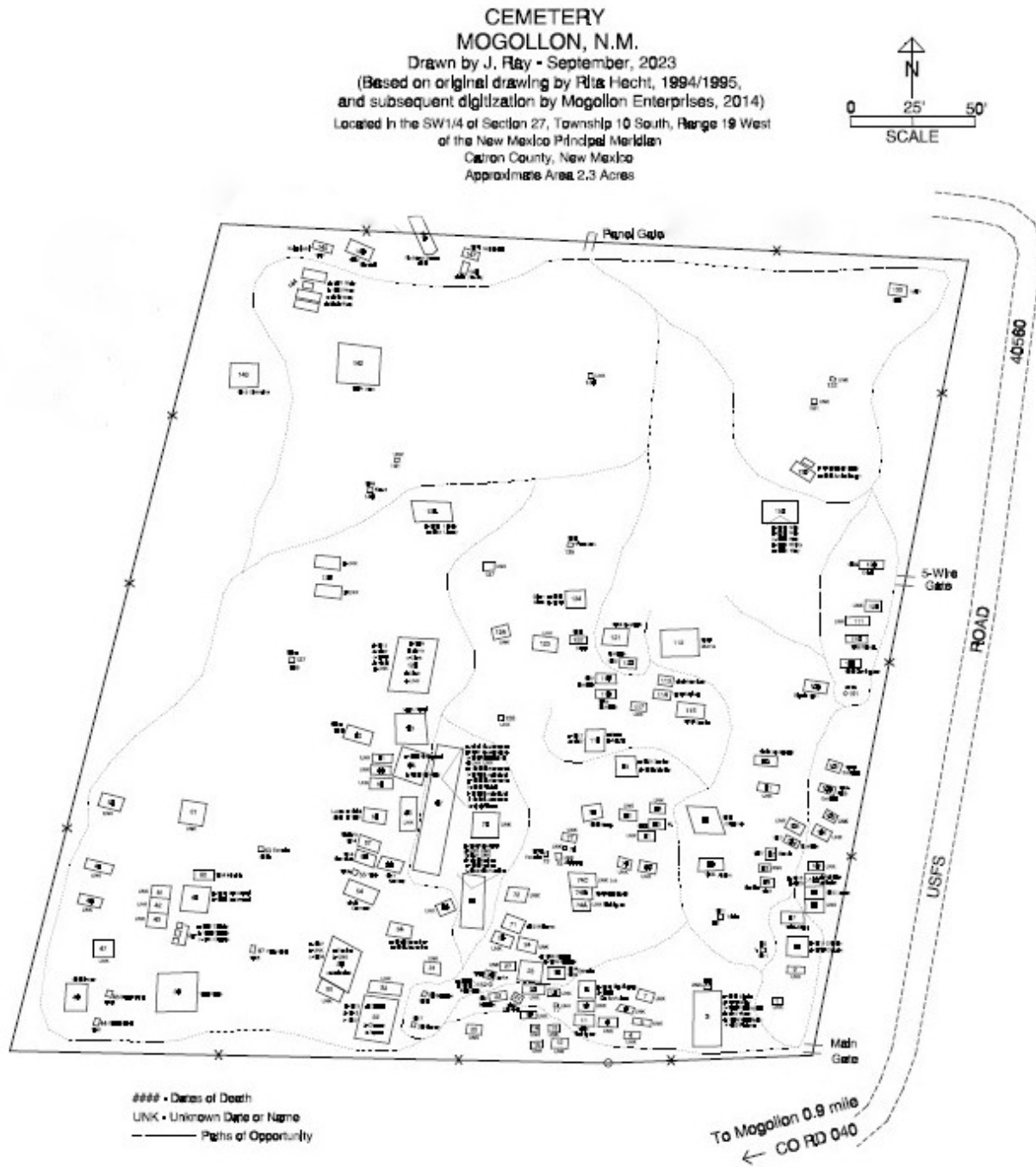
Catron County, NM
County and State



Mogollon Cemetery
Catron County, New Mexico
Sketch Map by Rita B. Hecht, 1995
No scale

Mogollon Cemetery
Name of Property

Catron County, NM
County and State

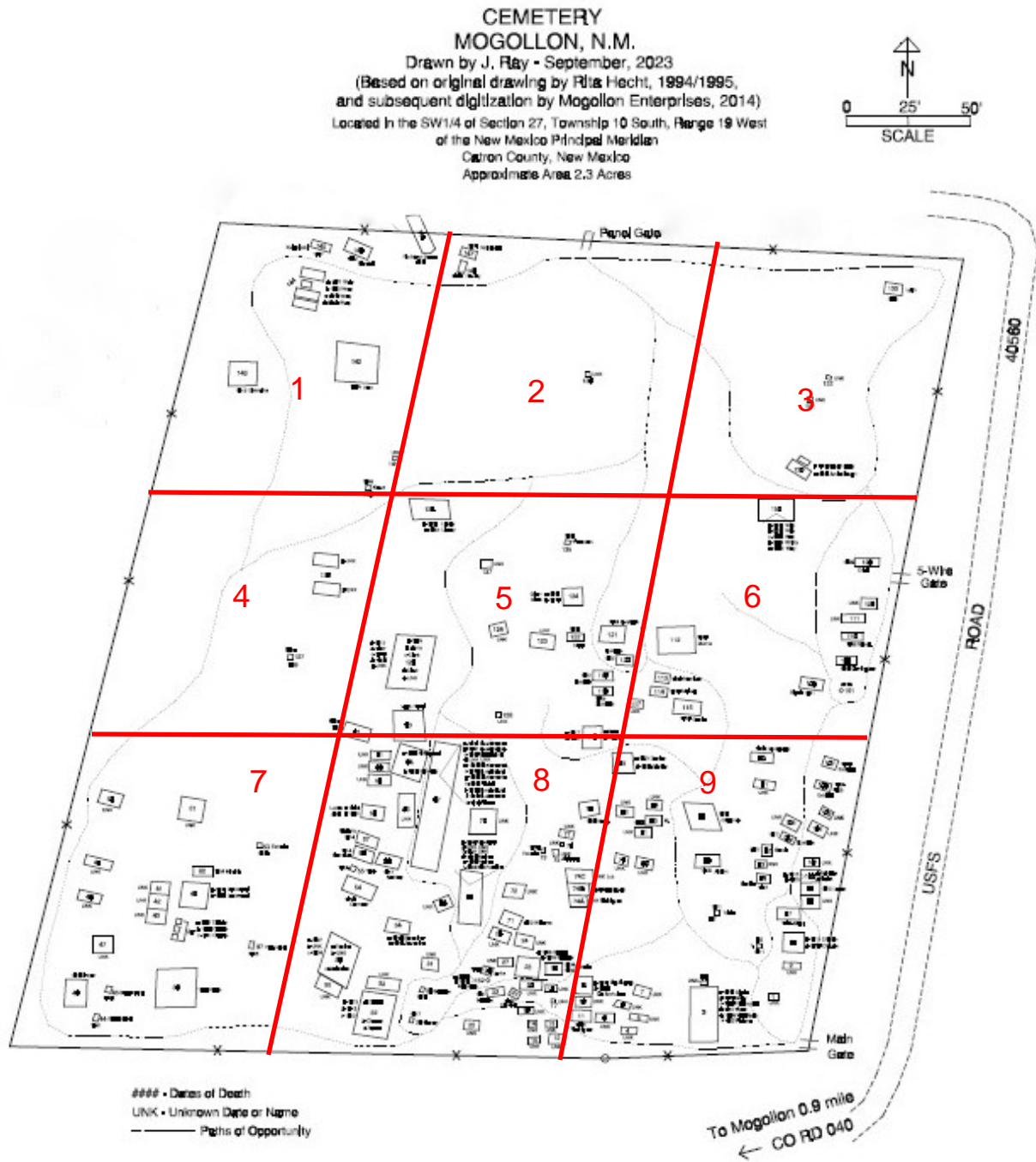


Mogollon Cemetery
Catron County, New Mexico

Mogollon Cemetery Inventory and Map
Jeff Ray, September 2023

Mogollon Cemetery
Name of Property

Catron County, NM
County and State

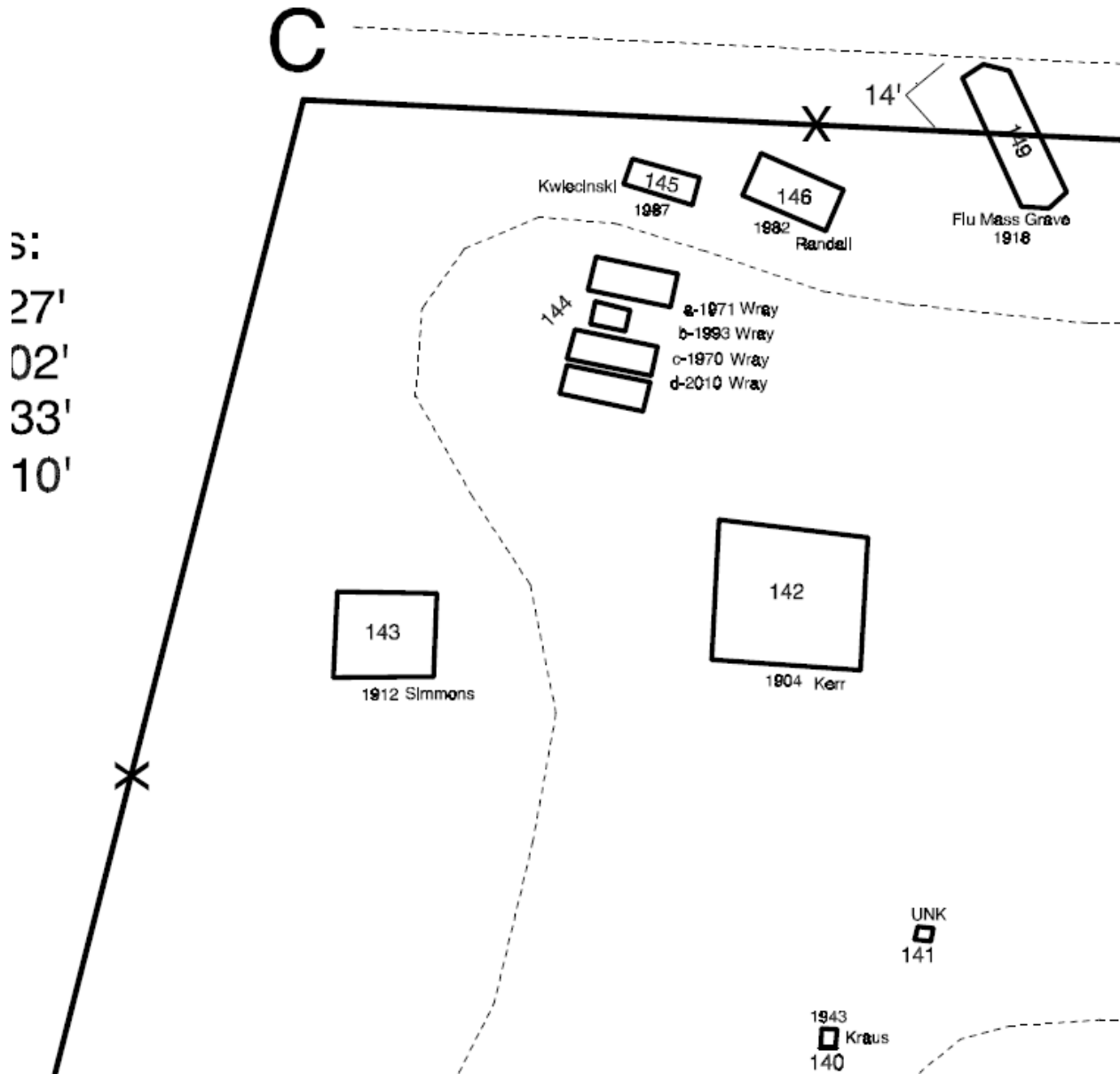


Mogollon Cemetery Map Key
Catron County, New Mexico

Mogollon Cemetery Inventory and Map
Jeff Ray, September 2023

Mogollon Cemetery
Name of Property

Catron County, NM
County and State

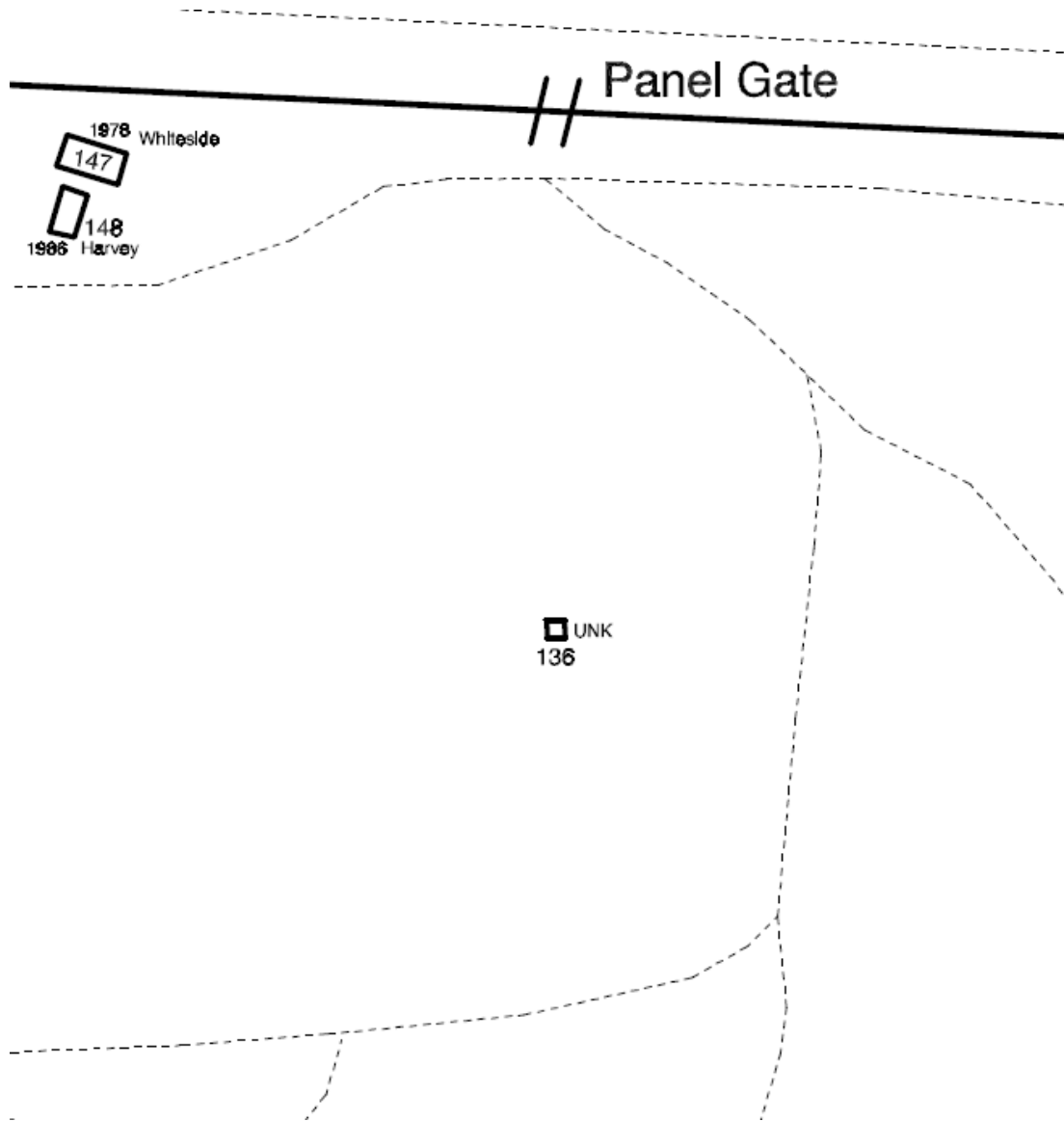


Mogollon Cemetery Map 1
Catron County, New Mexico
No scale



Mogollon Cemetery
Name of Property

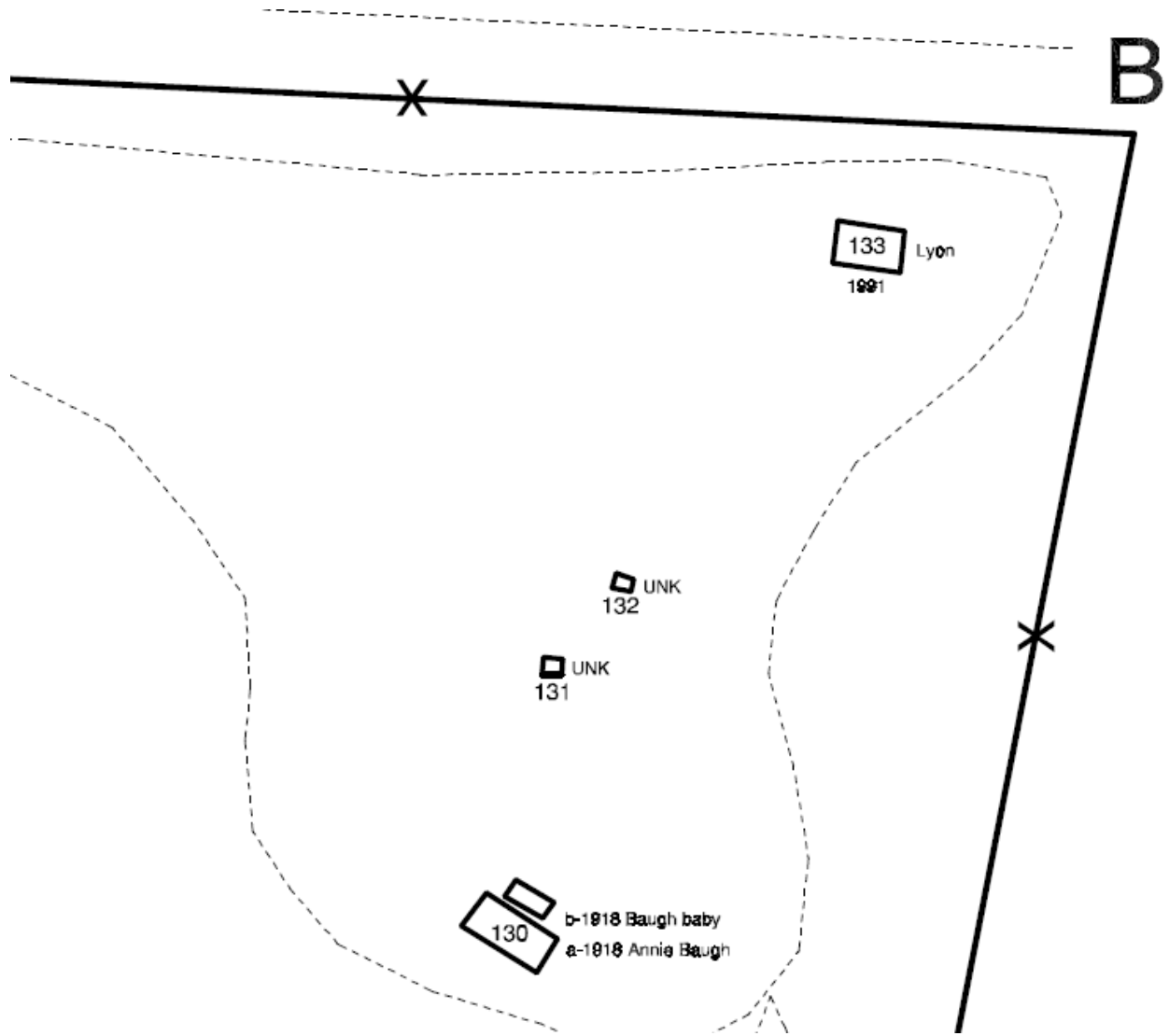
Catron County, NM
County and State



Mogollon Cemetery Map 2
Catron County, New Mexico
No scale

Mogollon Cemetery
Name of Property

Catron County, NM
County and State

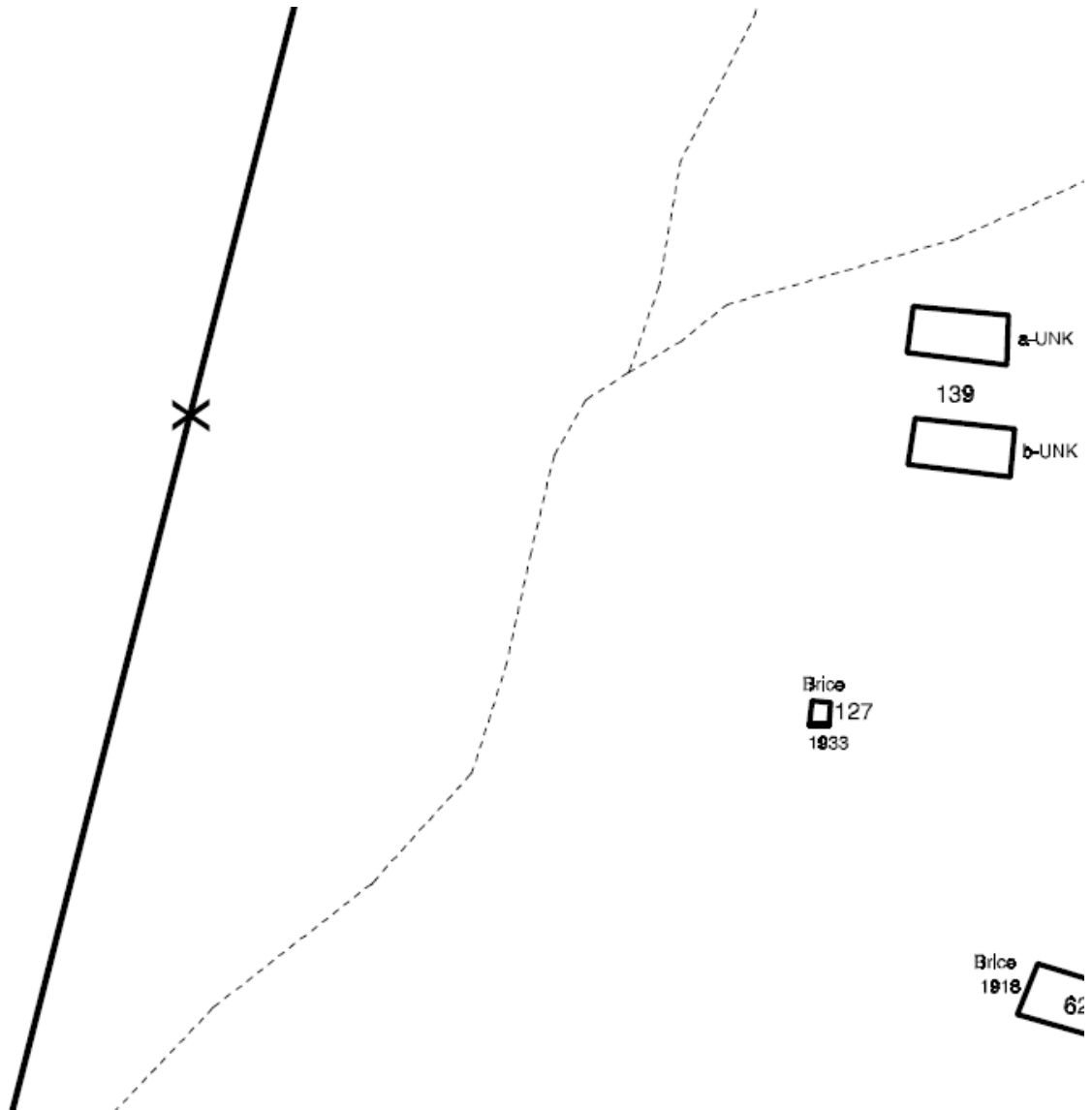


Mogollon Cemetery Map 3
Catron County, New Mexico
No scale



Mogollon Cemetery
Name of Property

Catron County, NM
County and State

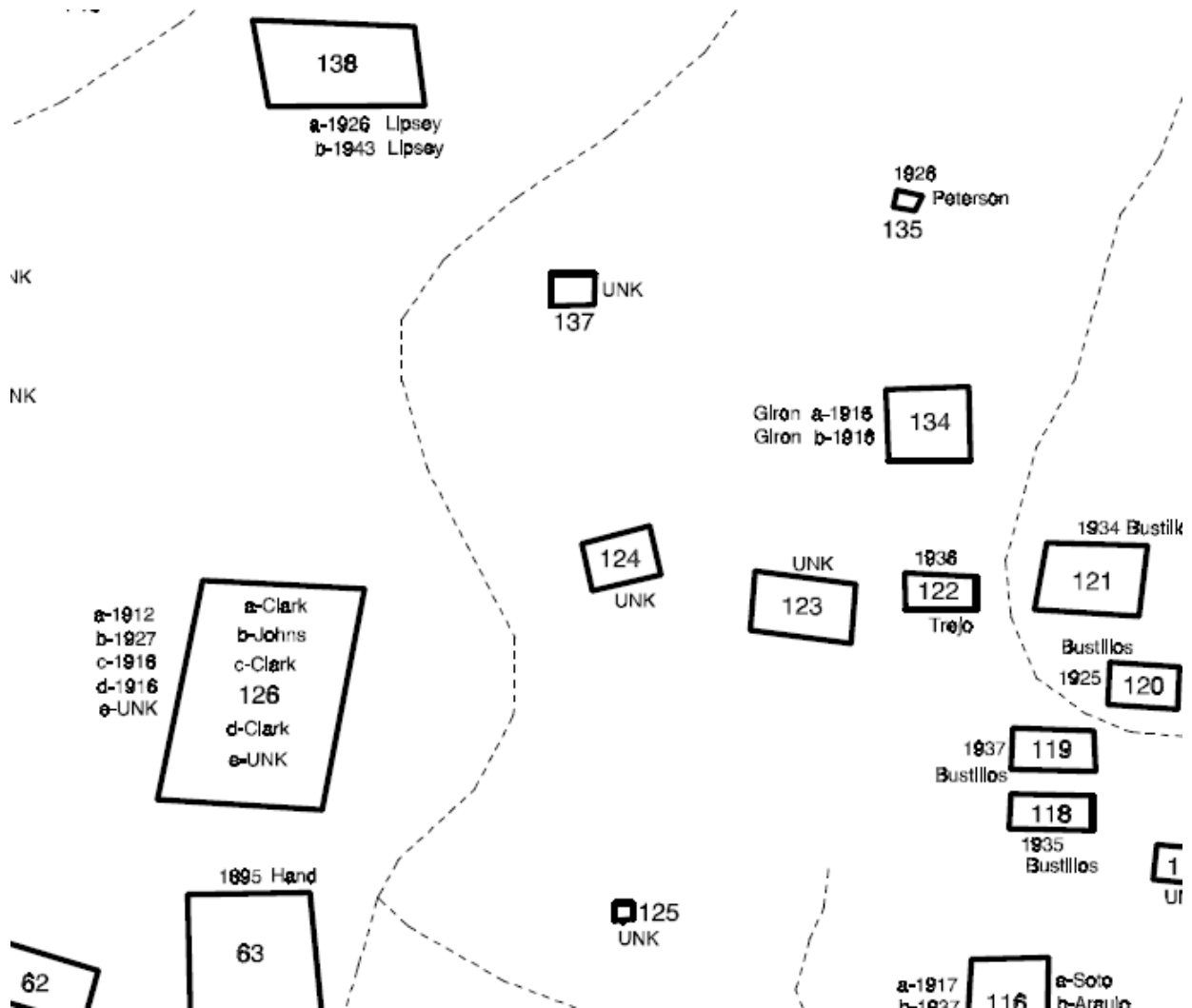


Mogollon Cemetery Map 4
Catron County, New Mexico
No scale



Mogollon Cemetery
Name of Property

Catron County, NM
County and State

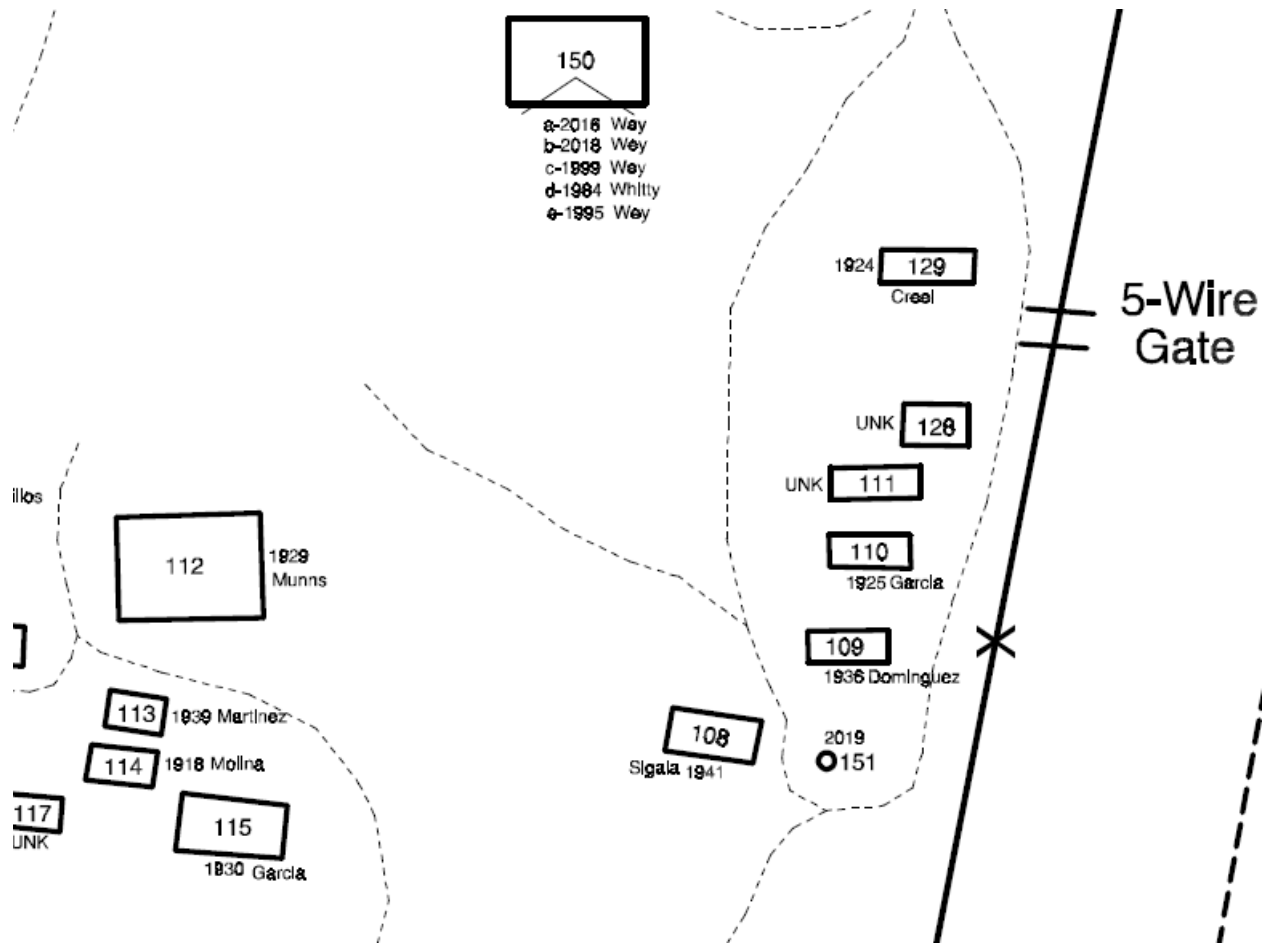


Mogollon Cemetery Map 5
Catron County, New Mexico
No scale



Mogollon Cemetery
Name of Property

Catron County, NM
County and State

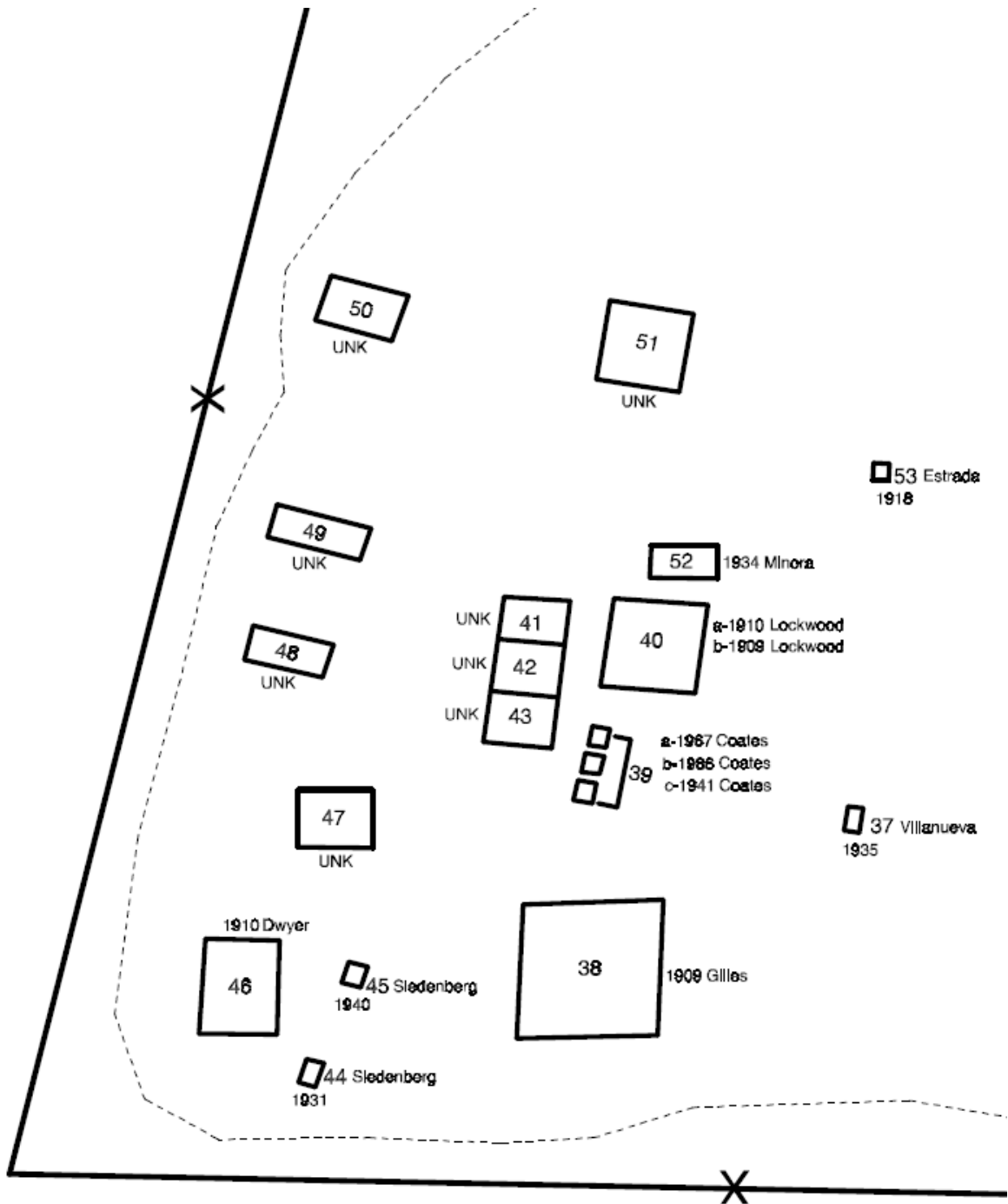


Mogollon Cemetery Map 6
Catron County, New Mexico
No scale



Mogollon Cemetery
Name of Property

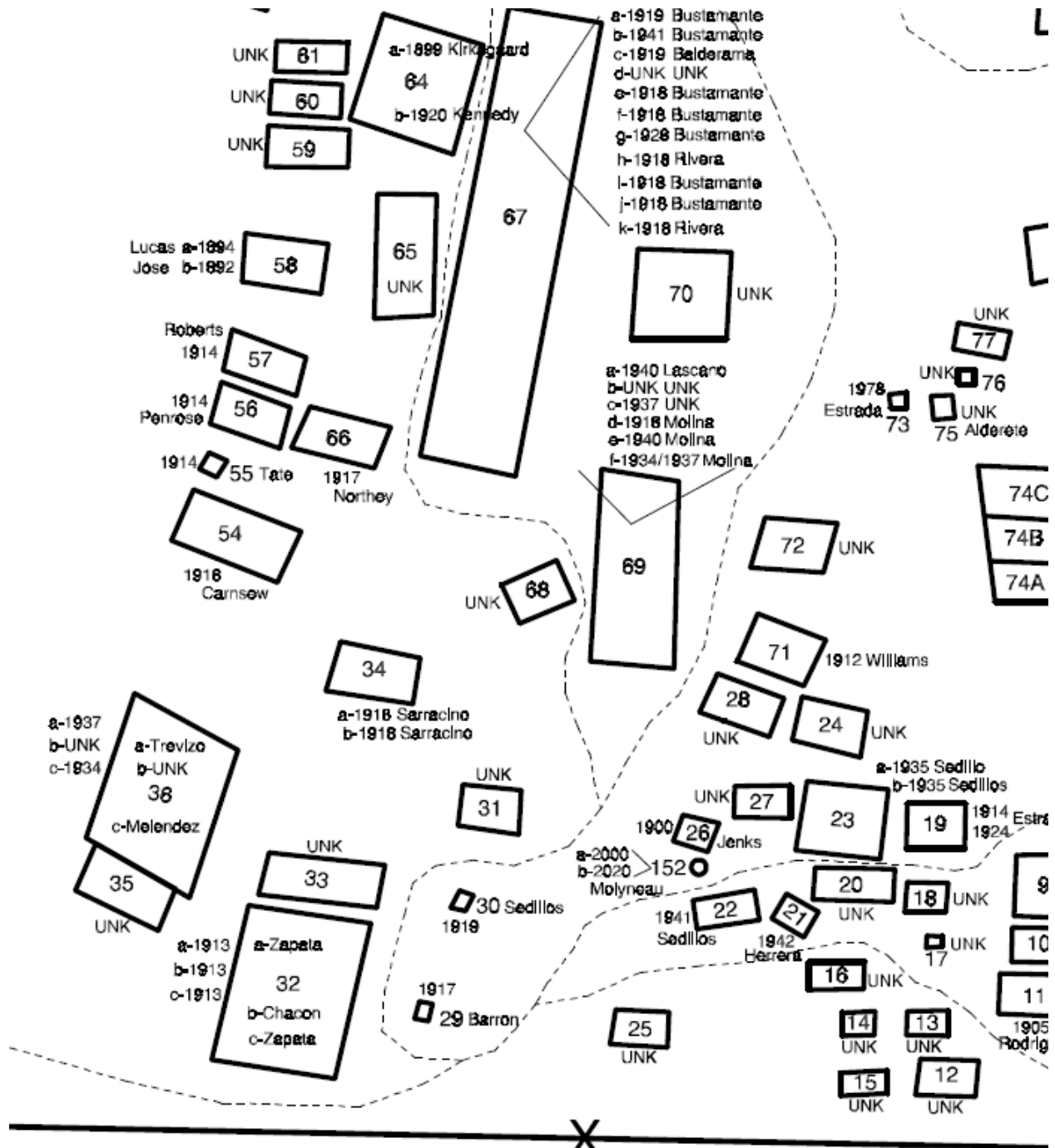
Catron County, NM
County and State



Mogollon Cemetery Map 7
Catron County, New Mexico
No scale

Mogollon Cemetery
Name of Property

Catron County, NM
County and State

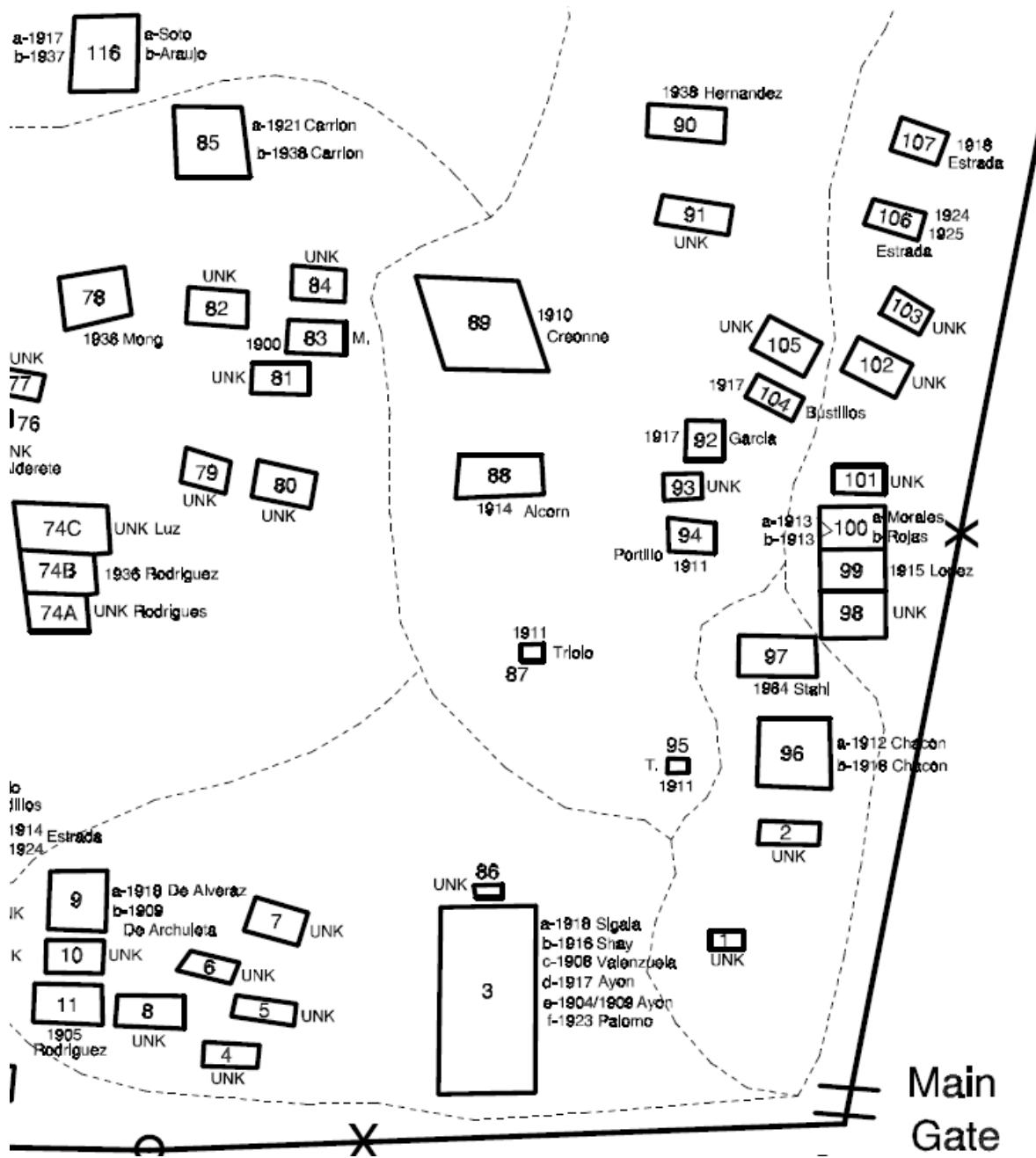


Mogollon Cemetery Map 8
Catron County, New Mexico
No scale



Mogollon Cemetery
 Name of Property

Catron County, NM
 County and State

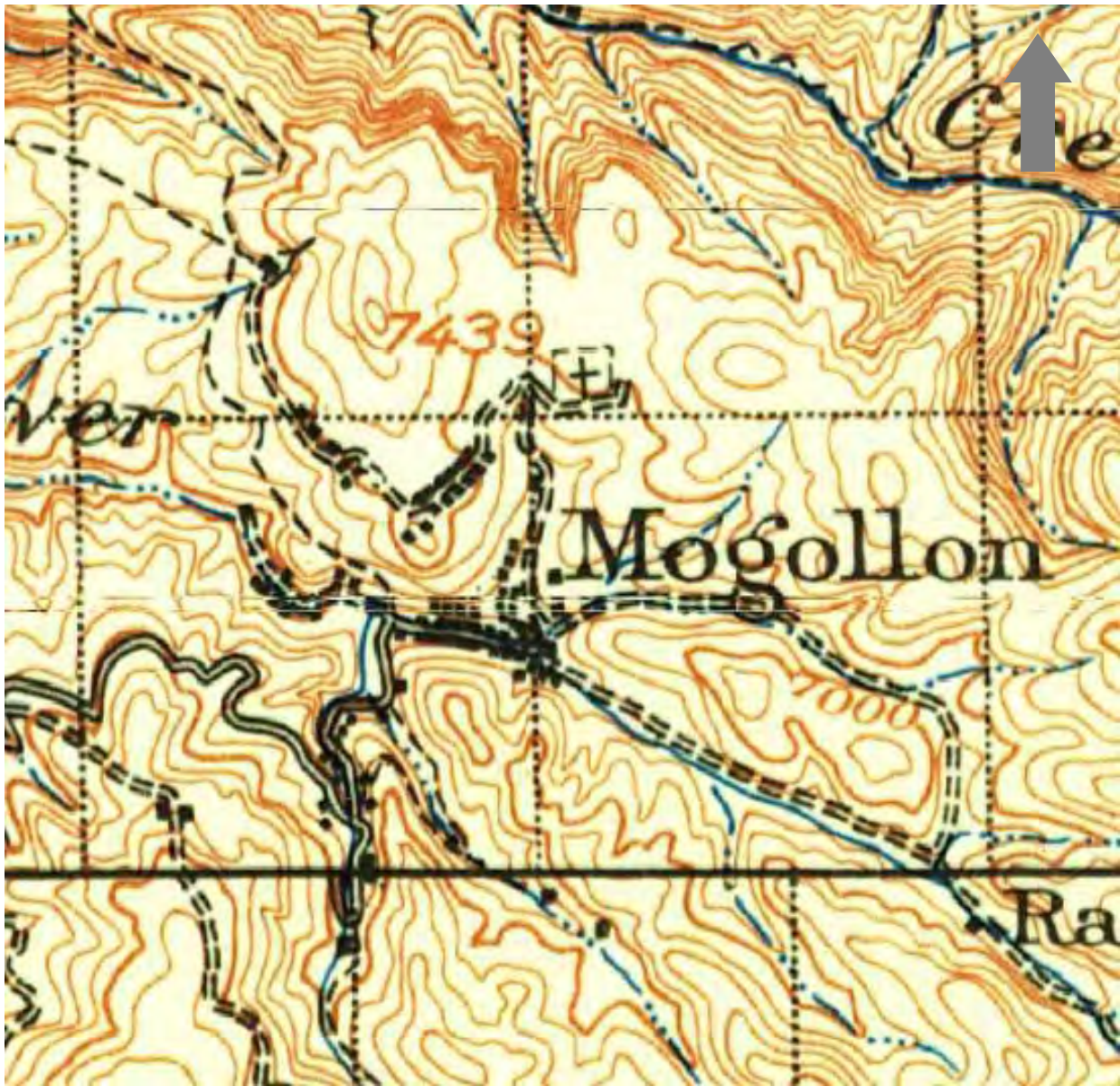


Mogollon Cemetery Map 9
 Catron County, New Mexico
 No scale



Mogollon Cemetery
Name of Property

Catron County, NM
County and State



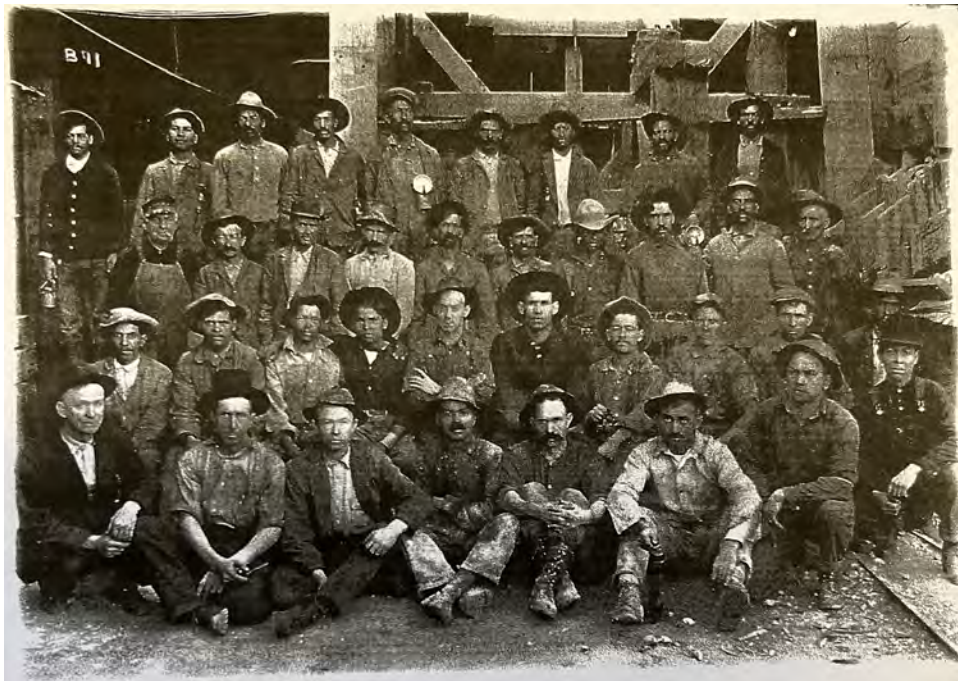
Mogollon Cemetery on USGS map, 1910
No scale

Mogollon Cemetery
Name of Property

Catron County, NM
County and State



Mogollon before 1942. Mogollon Museum collection, Book A



Fannie Mine Workers in 1915. Mogollon Museum Collection, Book B

Mogollon Cemetery
Name of Property

Catron County, NM
County and State



Fannie Mine Workers on August 23, 1914. Mogollon Museum collection. Book E

Mogollon Cemetery
Name of Property

Catron County, NM
County and State

Photographs



1 of 27. Main entrance gate, photographer facing west.

Mogollon Cemetery
Name of Property

Catron County, NM
County and State



2 of 27. Clearing on north side, photographer facing west.



3 of 27. Clearing on north side, photographer facing east.

Mogollon Cemetery
Name of Property

Catron County, NM
County and State



4 of 27. Clearing on south side, photographer facing west.

Mogollon Cemetery
Name of Property

Catron County, NM
County and State



5 of 27. Baugh family plots (d.1890 and 1918), photographer facing west (map 130).



6 of 27. Wey family plot (d.1999-2018), photographer facing west (map 150).

Mogollon Cemetery
Name of Property

Catron County, NM
County and State



7 of 27. Wood cross, photographer facing west (marker 7).

Mogollon Cemetery
Name of Property

Catron County, NM
County and State



8 of 27. Wood plaque bolted to metal post. Burial of Emil Peterson (1926). Photographer facing west.

Mogollon Cemetery
Name of Property

Catron County, NM
County and State



9 of 27. Metal cross constructed of electrical conduit, photographer facing east (marker 6).

Mogollon Cemetery
Name of Property

Catron County, NM
County and State



10 of 27. Metal cross with metal plate, photographer facing west (marker 17).

Mogollon Cemetery
Name of Property

Catron County, NM
County and State



11 of 27. Metal cross (pipe) and metal plaque. Burial of Ruben Estrada (1918). Photographer facing west.

Mogollon Cemetery
Name of Property

Catron County, NM
County and State



12 of 27. Cross formed by metal barrel hoop in the shape of a cross and supported by plumbing pipe. Unmarked burial. Photographer facing west.

Mogollon Cemetery
Name of Property

Catron County, NM
County and State



13 of 27. Cement marker with incised text. Burial of Abran Barron (1917).
Photographer facing west (marker 29).

Mogollon Cemetery
Name of Property

Catron County, NM
County and State



14 of 27. Wire cross with rock base, photographer facing west (marker 49).

Mogollon Cemetery
Name of Property

Catron County, NM
County and State



15 of 27. Miner's spike denotes burial, photographer facing west (marker 14).

Mogollon Cemetery
Name of Property

Catron County, NM
County and State



16 of 27. Sandstone marker with incised cross and hand-carved text. Burial of MF (1900). Photographer facing west (marker 83)

Mogollon Cemetery
Name of Property

Catron County, NM
County and State



17 of 27. Sandstone marker with incised cross, stars, and triangular base with text. Burial of Con Cedre Justa De Archuleta (1909). Photographer facing west (marker 9).

Mogollon Cemetery
Name of Property

Catron County, NM
County and State



18 of 27. Polished sandstone markers. Burials of Ramon Sarracino (1916) and Ramon Sarracino, Jr. (1918). Photographer facing west.

Mogollon Cemetery
Name of Property

Catron County, NM
County and State



19 of 27. Sandstone marker with Celtic cross. Burial of Ralph Jenks (1900). Photographer facing west.

Mogollon Cemetery
Name of Property

Catron County, NM
County and State



20 of 27. Wray family plot with commercial markers surrounded by stacked stones, photographer facing west (marker144).

Mogollon Cemetery
Name of Property

Catron County, NM
County and State



21 of 27. Rock cairn with inscription and wire heart. Burial of Lester And Lyneau Molyneau (d. 2000 and 2010), photographer facing east (marker 152).

Mogollon Cemetery
Name of Property

Catron County, NM
County and State



22 of 27. Rock mound covering victims of the Spanish Flu (1918), photographer facing south (marker 149).

Mogollon Cemetery
Name of Property

Catron County, NM
County and State



23 of 27. Marble cross with crucifixion surrounded by woven-wire fence. Burial of Marie Trevizo (d.1937), photographer facing west (marker 36).

Mogollon Cemetery
Name of Property

Catron County, NM
County and State



24 of 27. Granite column surrounded by woven-wire fence. Burial of Thomas Penberthy Williams (d. 1912), photographer facing west (marker 71).

Mogollon Cemetery
Name of Property

Catron County, NM
County and State



25 of 27. Marble lamb with woven-wire fence. Burial of Estela Portillo (d.1911), photographer facing west (marker 94).

Mogollon Cemetery
Name of Property

Catron County, NM
County and State



26 of 27. Sandstone commercial marker, Burial of John Jose (d.1892), photographer facing west (marker 58).

Mogollon Cemetery
Name of Property

Catron County, NM
County and State



27 of 27. Cast-iron angel commercial marker, Burial of Encarcion Rodriguez Carrion (d.1921), photographer facing west (marker 85).